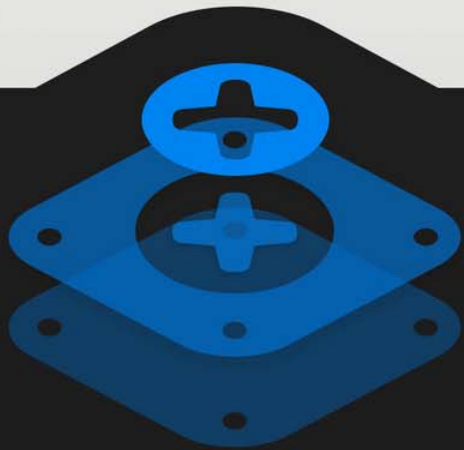


Apple Watch Series 3



TEARDOWN



Apple TAPTIC ENGINE

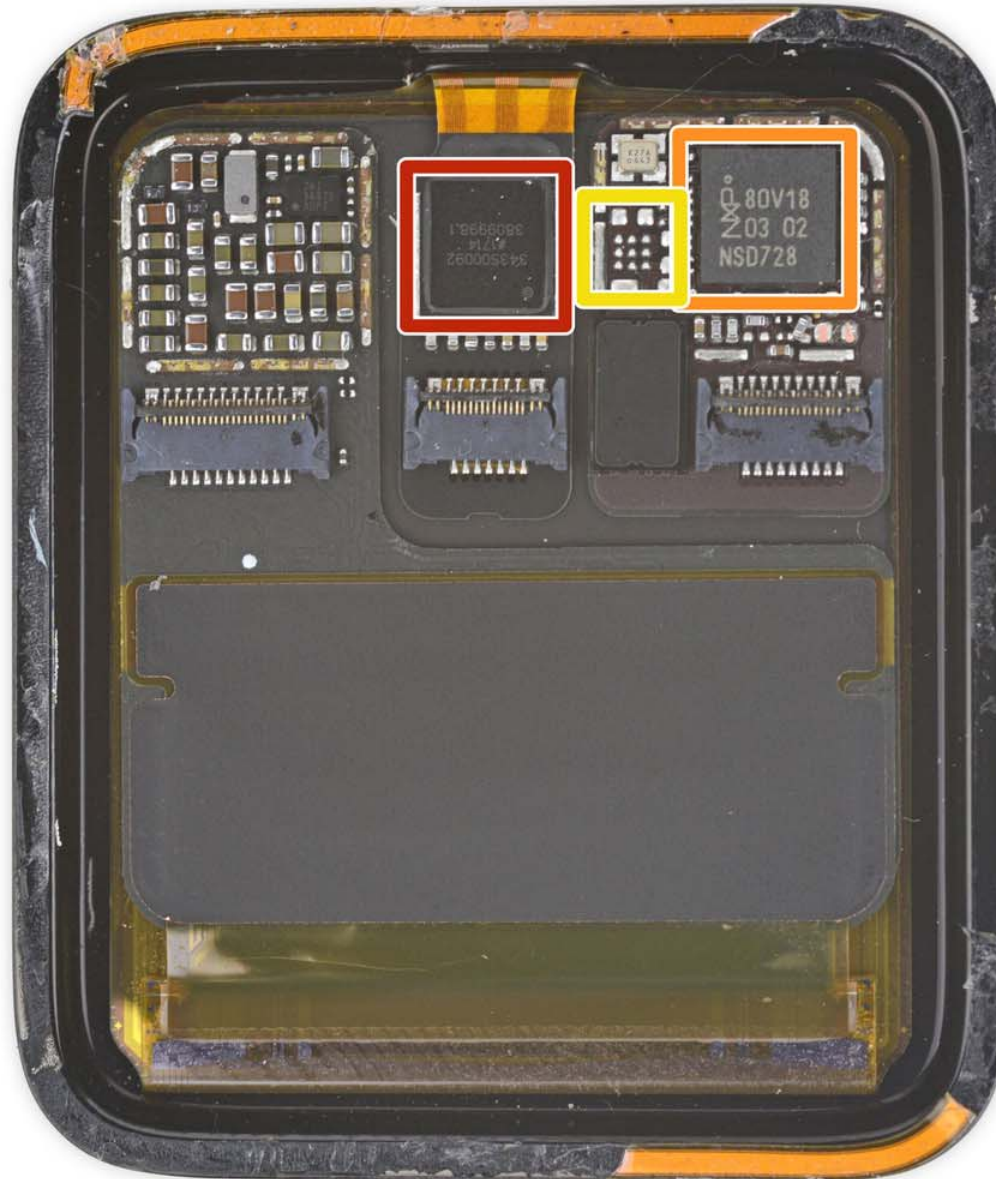
Li-ion Battery A1848 11CP6/18/26
SN/T 19287-2019 3.82V±0.02V 1.07Whr
279mm×116.4×35mm Assembled in
China Y190165-17011 509 A1848
Apple Watch Series 4 (GPS, Cellular) 42mm
Apple Watch Series 4 (GPS, Cellular) 42mm

992

Display

Touch controller

NFC

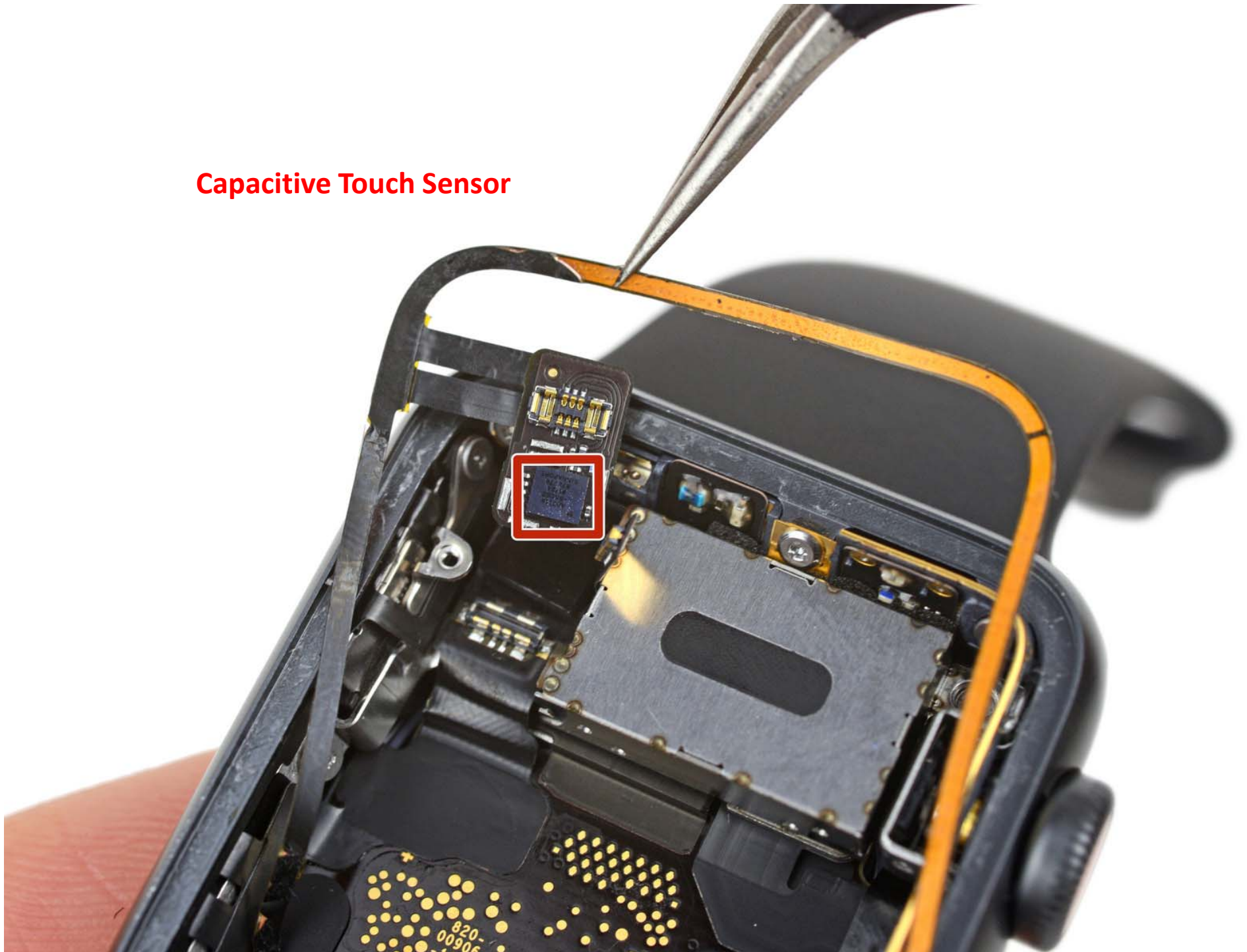


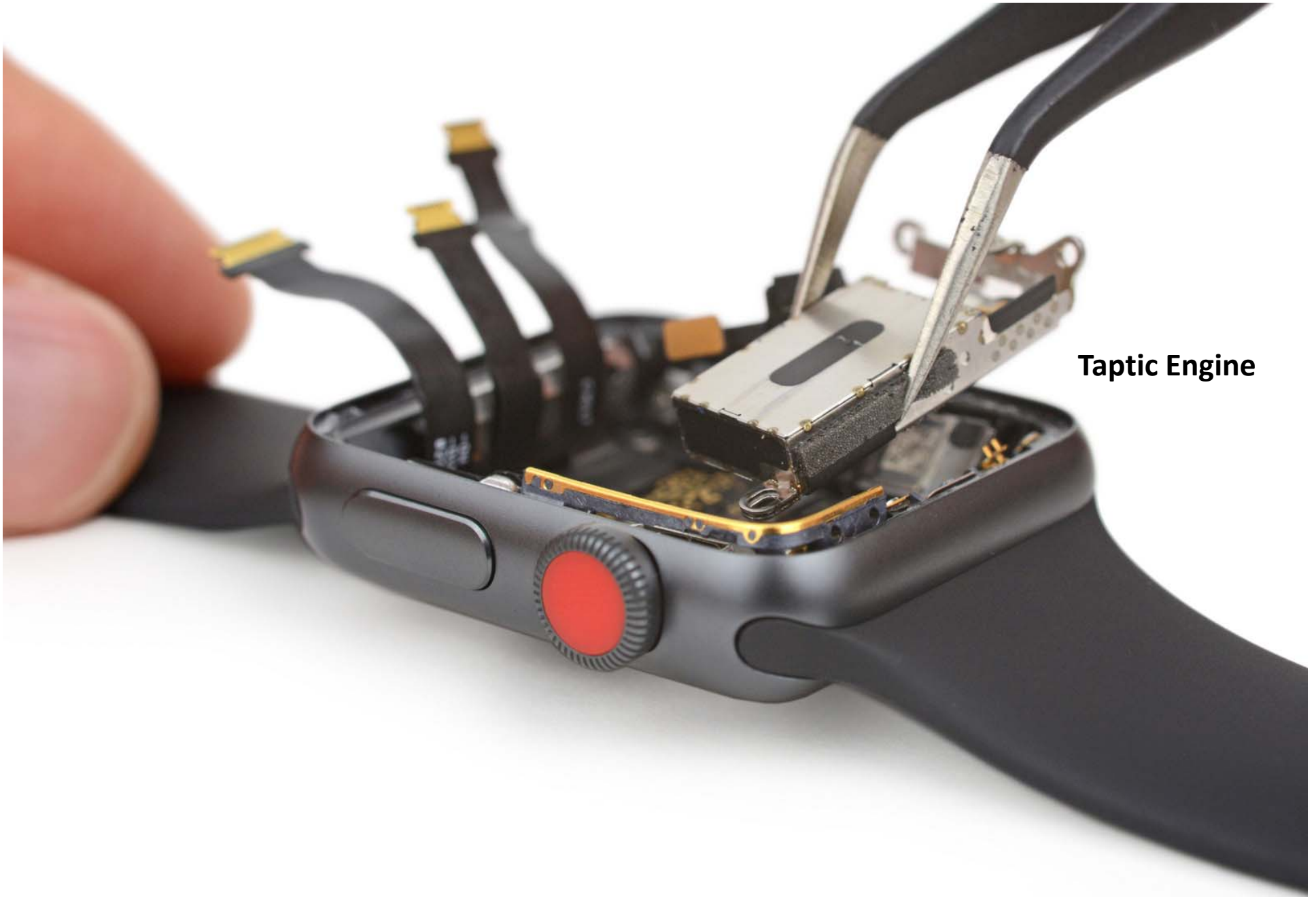


Apple
TAPTIC
ENGINE

+ Li-Ion Battery A1849 11CP6/18/26
68/T 18287-2013 3.82V 1.07Whr
279mAh Uci 4.35Vdc Assembled in
China YU10165-17011 型号 A1849
警告: 请勿拆解, 弯曲, 挤压, 加热或投入
火中, 严禁接触或浸水后禁止使用 锂电池
制造商: 惠州市德普电源有限公司

Capacitive Touch Sensor





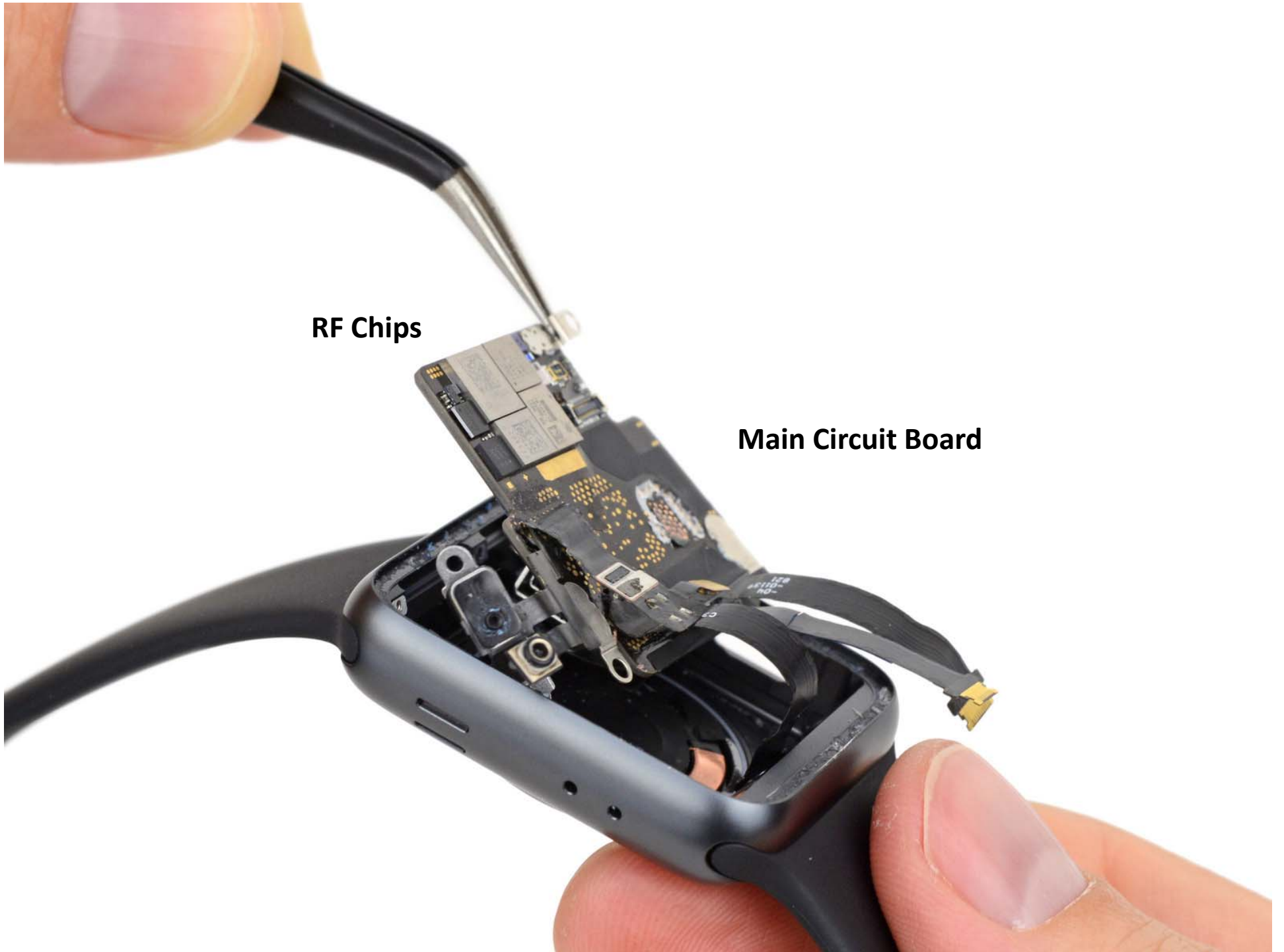
Taptic Engine

GPS Antenna



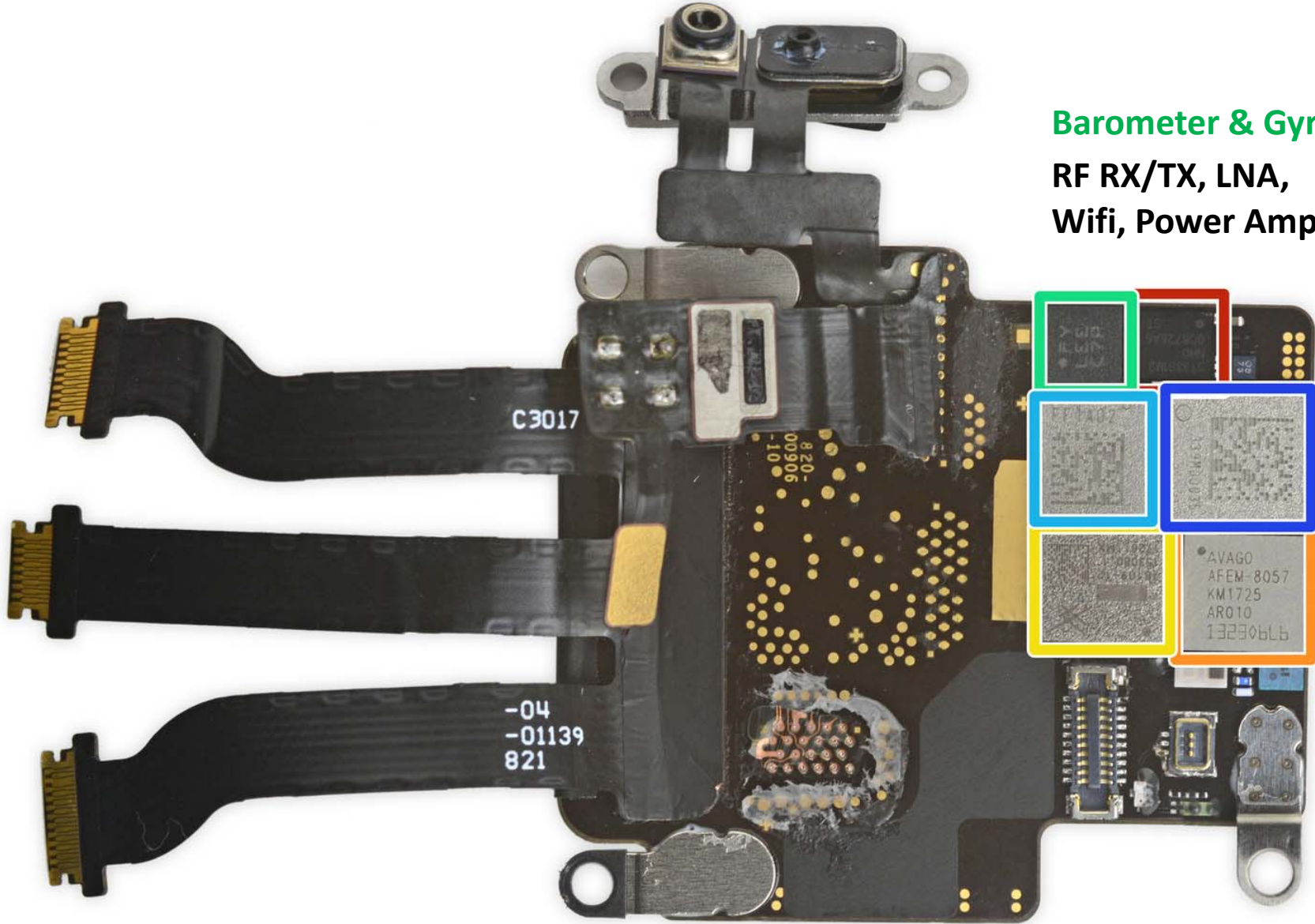
Speaker





RF Chips

Main Circuit Board



Barometer & Gyro

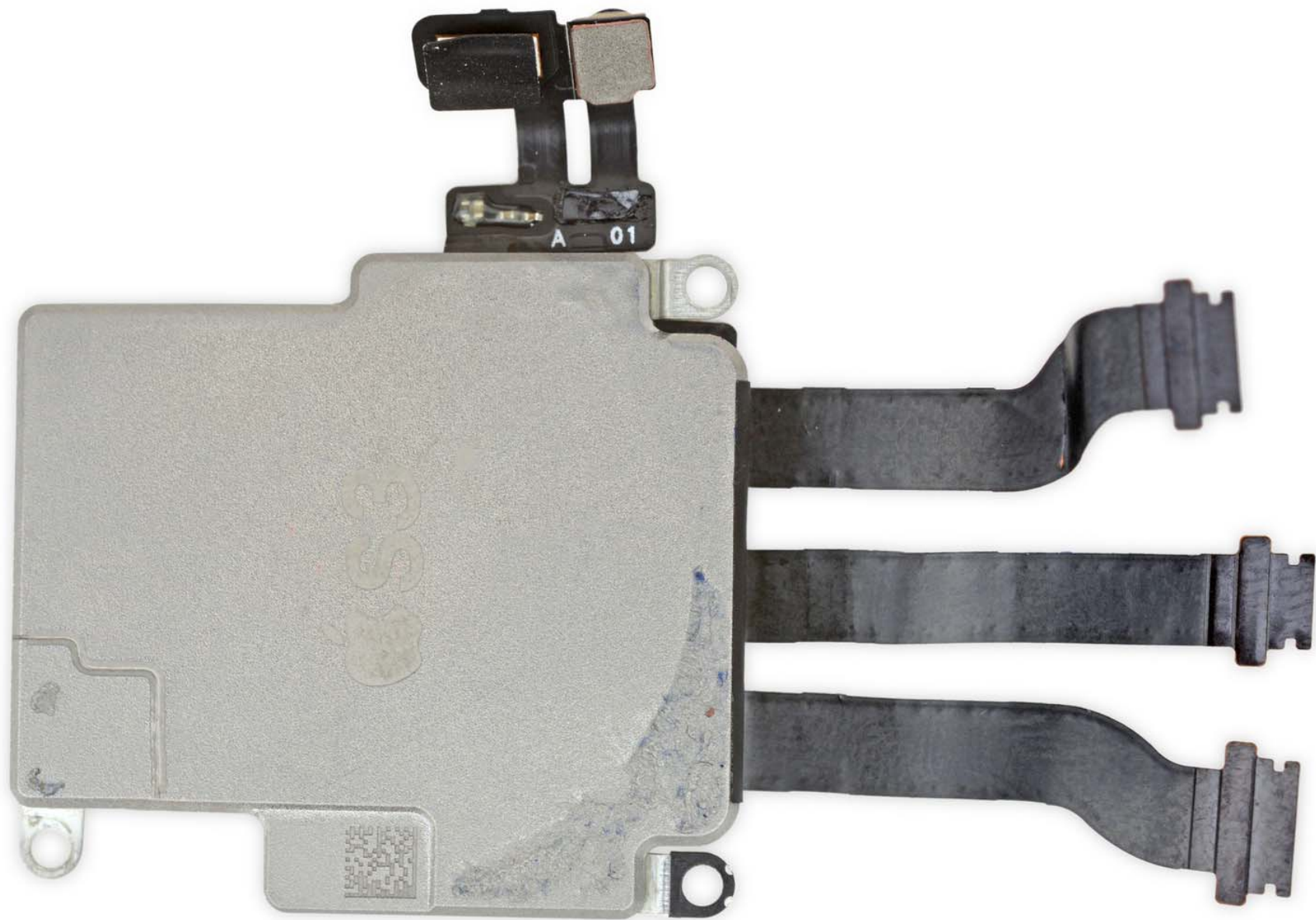
**RF RX/TX, LNA,
Wifi, Power Amp**

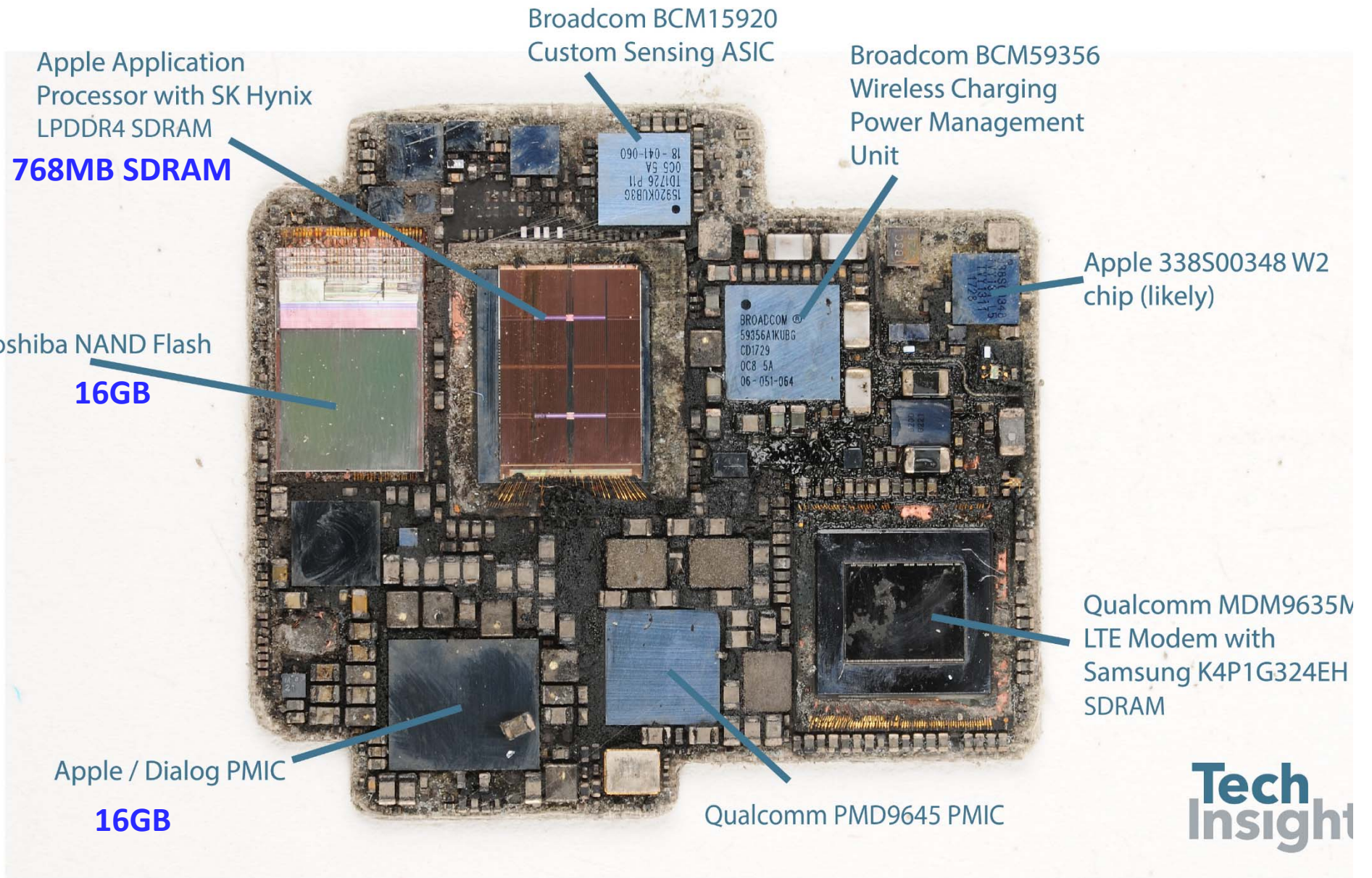
C3017

820-
00906
-10

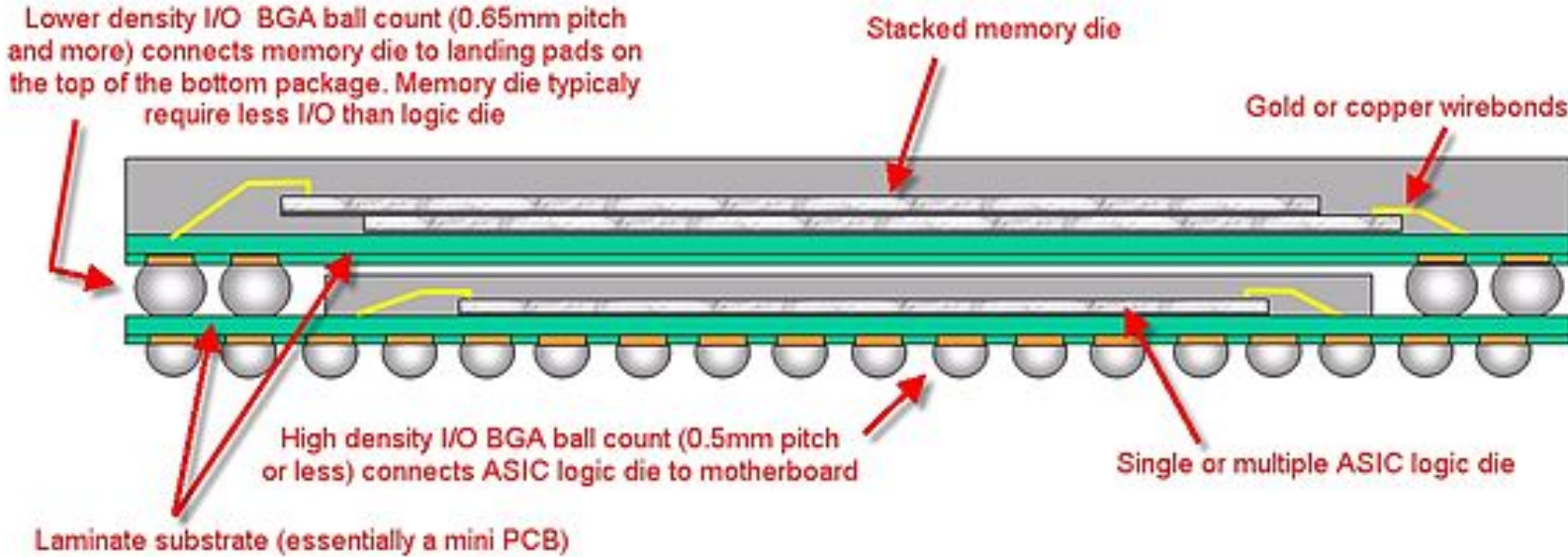
-04
-01139
821

AVAGO
AFEM-8057
KM1725
AR010
132306L6



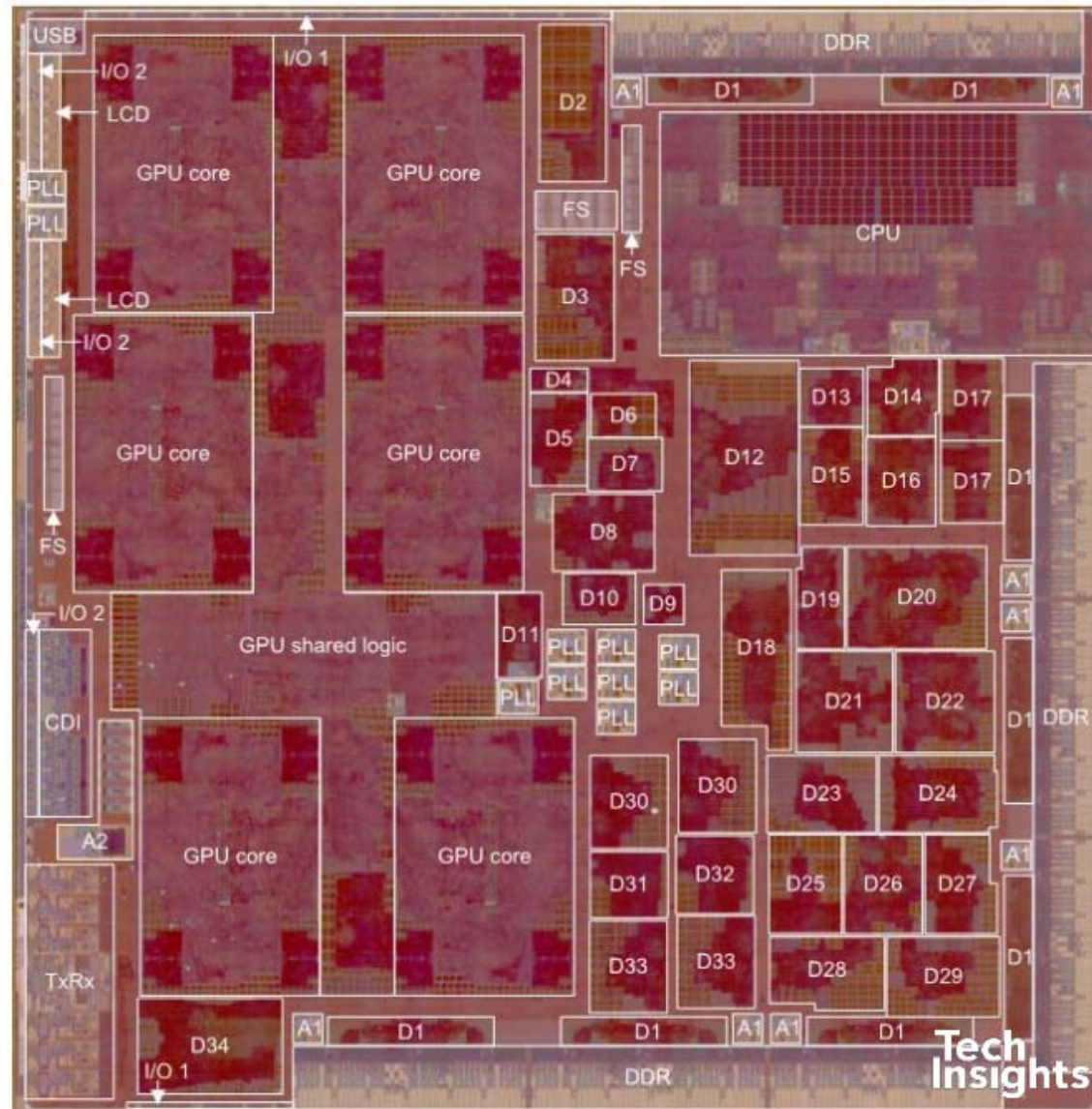


Package on Package



Apple A9X SoC Floor Plan

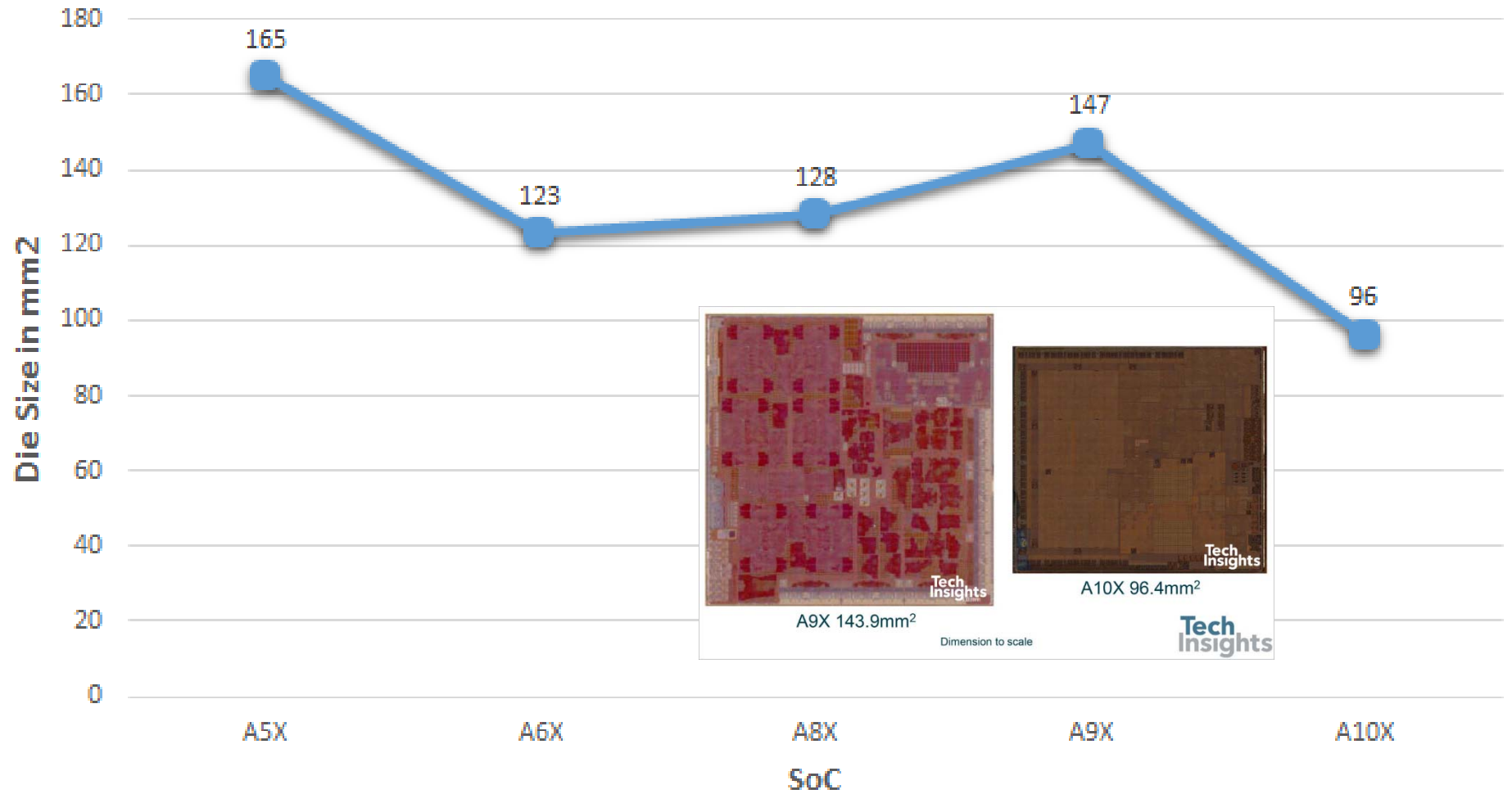
147 mm²
16nm



Dual CPU Core
'Twister'
2.26GHz

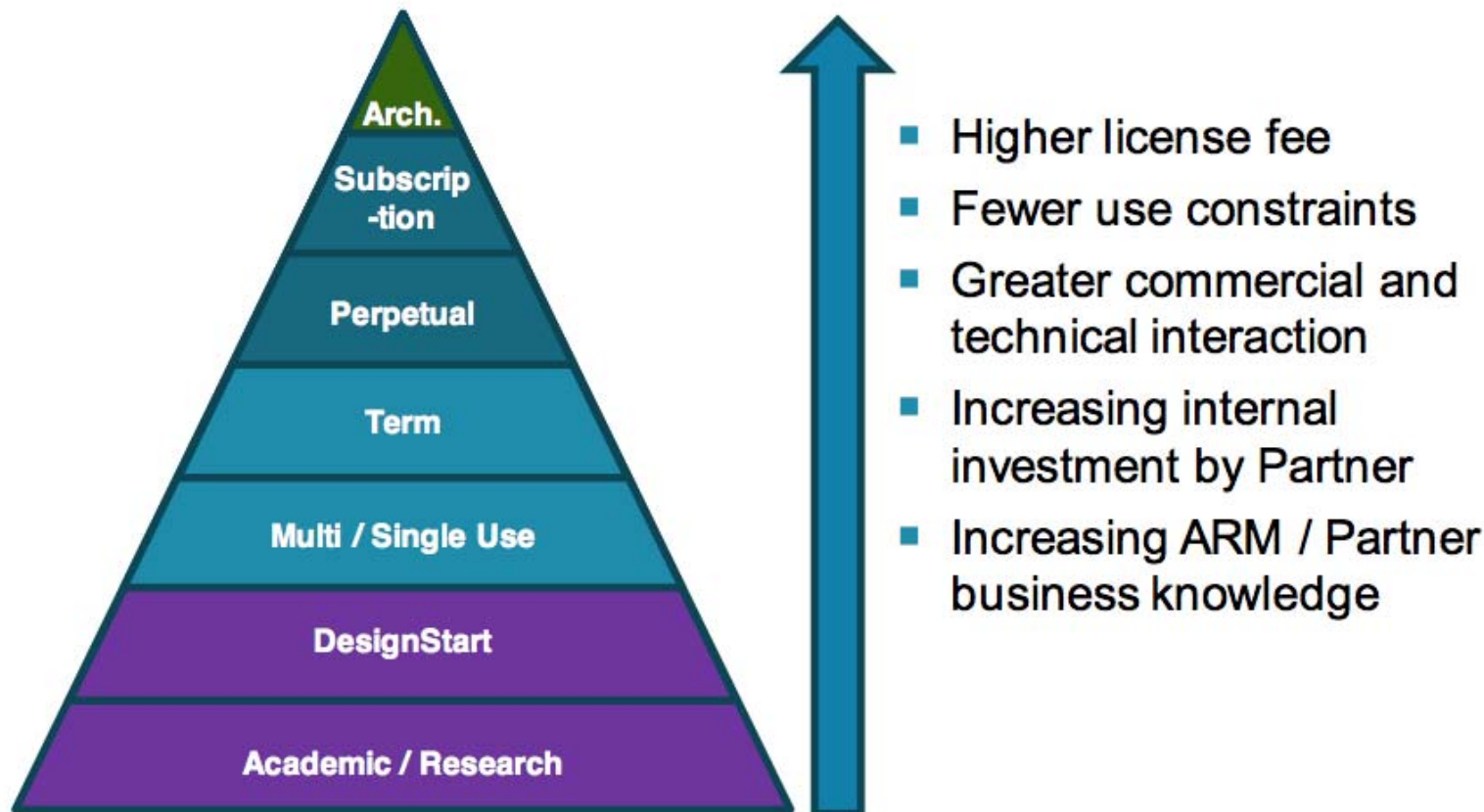
'Peripherals'

Apple Tablet SoC Die Size



Broad Range of Licensing Options

- Innovation in the business model as well as technology
 - New partnerships for new types of companies



- <https://www.anandtech.com/show/11596/techinsights-confirms-apple-a10x-soc-10nm-tsmc>
- <https://www.anandtech.com/show/9824/more-on-apples-a9x-soc>
- <http://techinsights.com/about-techinsights/overview/blog/apple-watch-series-3-teardown/>
- <https://www.ifixit.com/Teardown/Apple+Watch+Series+3+Teardown/97521>
- <https://www.anandtech.com/show/7112/the-arm-diaries-part-1-how-arms-business-model-works>